



المدرسة وينشستر  
The Winchester School  
Jebel Ali

# Welcome to the Foundation Stage Parent Orientation

## Thursday, 1<sup>st</sup> September 2022



1<sup>st</sup> September 2022

[www.gemseducation.com](http://www.gemseducation.com)

# OBJECTIVES



- To apprise parents of the key information, school's rules, regulations & policies, curriculum expectations, curriculum delivery, inclusion, assessment, enrichment, well being and various other aspects of school life
- To encourage parents to collaborate with school to maximise their child's potential and enhance his/her overall development and achievements.



# SENIOR LEADERSHIP TEAM



**Meenakshi Dahiya**  
Principal & CEO



**Harpreet Kaur**  
Vice Principal



**Gaber Sayah**  
Head of Arabic & Islamic Education



**Jaya Paliwal**  
Head of Primary



**Kathryn Darashah**  
Head of Inclusion



**Elizabeth Jacob**  
Head of Professional  
Development



**Anna Francis Cherukara**  
Head of Innovation &  
Curriculum Enrichment



**Debbiejo Miranda**  
Head of Well-Being



**Deepika Dayal**  
Teaching & Learning Coach  
Primary



[www.gemseducation.com](http://www.gemseducation.com)



# EXTENDED LEADERSHIP TEAM



**Mr Mohamed Nisar**  
**Lead Practitioner and  
Academic Advisor**  
[mohamednisar.v\\_win@  
Gemsedu.com](mailto:mohamednisar.v_win@Gemsedu.com)



**Ms Shirin farzana**  
Educational Technology  
Advisor for Whole School  
[SHIRIN.F\\_WIN@gemsedu.com](mailto:SHIRIN.F_WIN@gemsedu.com)



**Mr Neijin Pathrose**  
**Health and Safety Advisor**  
[NEIJIN.P WIN@gemsedu.com](mailto:NEIJIN.P_WIN@gemsedu.com)



**Ms. Sujaya Sen**  
**Head of Examination**  
[sujaya.s\\_win@gemsedu.com](mailto:sujaya.s_win@gemsedu.com)



**Ms Shalini Rajan**  
Future Skills and  
Experiential Learning  
Advisor for Whole School



**Ms Desiree Scott**  
**Head of Foundation  
Stage**  
[DESIREE.S WIN@gemsedu.com](mailto:DESIREE.S_WIN@gemsedu.com)





# FOUNDATION STAGE TEAM



**Ms. Sonia Sehgal**  
Head of Year – FS1

[sonia.s\\_win@gemsedu.com](mailto:sonia.s_win@gemsedu.com)



**Ms. Rebecca Morton**  
Asst. Head of Year – FS1

[rebecca.m1\\_win@gemsedu.com](mailto:rebecca.m1_win@gemsedu.com)



**Ms. Desiree Scott**  
Head of Early Years

[DESIREE.S\\_WIN@gemsedu.com](mailto:DESIREE.S_WIN@gemsedu.com)



**Ms. Leena Premjith**  
Head of Year – FS2

[leena.p\\_win@gemsedu.com](mailto:leena.p_win@gemsedu.com)



**Ms. Dascal Fernandes**  
Asst. Head of Year – FS2

[dascal.f\\_win@gemsedu.com](mailto:dascal.f_win@gemsedu.com)



# WHAT IS THE EARLY YEARS FOUNDATION STAGE??



- The Early Years Foundation Stage (E.Y.F.S.) is the stage of education for children from **birth to 5 years**
  - **Foundation Stage-1**     **3 to 4 years**
  - **Foundation Stage-2**     **4 to 5 years**
- It is based on the recognition that children learn best through **play and active learning.**



# EYFS IS DELIVERED AROUND THESE 4 THEMES



**Positive Relationships**



**Enabling Environment**

**A Unique Child**

**Student**



**Learning and Development**



**GEMS**  
EDUCATION

[www.gemseducation.com](http://www.gemseducation.com)



Within the theme of Learning and Development there are 7 areas. All areas are connected to one another and are **equally important**.

**Prime** All areas of learning are reflected both indoors and outdoors.

1. Communication and Language
2. Physical Development
3. Personal, Social and Emotional Development

**Specific**

1. Literacy
2. Mathematics
3. Understanding the World
4. Expressive Arts and Design







## THREE PRIME AREAS

### Communication and Language

1. Listening and attention
2. Understanding
3. Speaking



### Physical Development

1. Moving and handling
2. Health and self-care



### Personal, Social and Emotional Development

1. Making relationships
2. Sense of self
3. Understanding Emotions



# FOUR SPECIFIC AREAS



## Literacy

1. Reading
2. Writing

## Mathematics

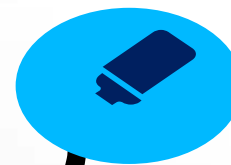
1. Numbers
- Spatial Awareness
- Shape

## Understanding the World

1. People and Communities
2. The World
3. Technology

## Expressive Arts and Design

1. Creating with materials
2. Being imaginative and expressive



# THE PRIME AREAS



Communication and language



Physical Development



Personal, social and emotional Development





# THE SPECIFIC AREAS



## Literacy



### Reading

- Comprehension
- Word Reading

### Writing



## Mathematics

Number  
Numerical  
Patterns





# THE SPECIFIC AREAS

## Understanding the World

Past and Present

People, Culture and Communities

The Natural World



## Expressive Arts and Design

Creating with materials

Being imaginative and expressive





# ASSESSMENT, RECORDING AND REPORTING



- Teachers build up their assessments throughout the year on a cumulative basis, from on-going learning and teaching.
- They make regular assessments, observations and recordings of children's learning, and we use this information to ensure that future planning reflects identified needs.
- **Look, listen and note**
- Observations of children help them to assess the progress which children are making and to decide where children are in their learning and development and to plan what to do.
- At the end of every term we report if your child is 'Emerging' or working at the 'Expected' Level.
- At the end of FS 2, we report on the 17 Early Learning Goals (ELG) as Emerging and Expected.

# READING IN FS1



- We encourage children to picture read the books.
- In a typical day at school, we follow 'Read 5 a day' book policy.
- We have a reading area where children can choose a book of their interest and read with their friends.
- We also take children outdoors to read such as in our school garden area and on reading field trips.
- We also invite parent volunteers, reading buddies, older siblings and grandparents to read and listen to the children.
- We also introduce different letter sounds and by end of FS1, most children start reading two and three letter words and are confident to blend different sounds.





# A TYPICAL DAY IN FS1

Time	Activities
07:30 to 08:00	Choose activities for registration time. Attendance and Morning circle time.
08:00 to 08:30	A look at the visual timetable to be prepared for the day. Rhyme Time, Show & Tell, Reading time.
08:30 to 09:00	Teacher-led/ Student-initiated activities.
09:00 to 09:30	Indoor Activities (Music and Movement, Role play, Construction area)
09:30 to 10:00	Snack Time/ reading time.
10:00 to 10:30	Teacher led/ student initiated activities.
10:30 to 11:00	Outdoor Activities. (Play area, Garden area, Bike area)
11:00 to 11:30	Child initiated activities and Circle time.
11:30 to 12:00	Tidy up time, Story time and home time.
11:45	Students using bus transport depart
12:00	Students using own transport depart



## READING IN FS 2



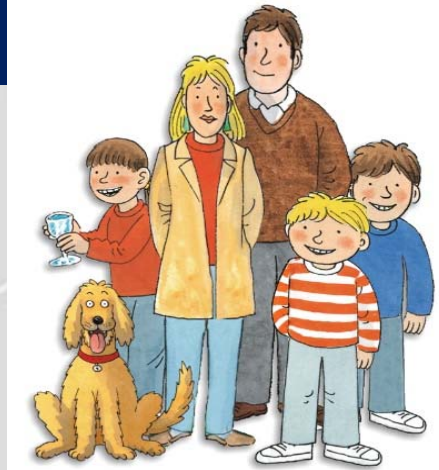
In FS2, We follow the **Oxford Reading Tree Scheme**.

The ORT books are sent home every week along with the **Take Home** cards.

These books are levelled starting with picture reading and then to simple words and sentences.

Individual reading happens once a week and class reading happens every day. Your child will be given the opportunity to “read” their book in school and when they have read to us we will write a comment in their record book. It is important that you sign their book and write a comment when they have read to you.

We also invite parent volunteers, reading buddies, sixth form students, and older siblings to read and listen to the children.



## A TYPICAL DAY IN FS2



Time	Activities
7:30 to 8:00	Registration Time/Arabic
8:00 to 8:30	Look at the visual timetable for the day. Activities - ORT Reading/ Mental Maths/ Dress up Day/Rhyme time.
8:30 to 9:00	Jolly Phonics
9:00 to 9:30	Snack Time / Reading Time.
9:30 to 10:30	Indoor Activities. (Investigation, Literacy, Numeracy, Role Play, Art)
10:00 to 10:30	Teacher led / Student initiated activities.
10:30 to 11:00	Outdoor Activities. (Maths and Movement/ Music and Movement/ Garden Area/ Bike Area/ Play Area)
11:00 to 11:30	Child initiated activities. Circle time - Plenary – looking for learning.
11.30 to 12:00	Story time / Tidy up and home time. Own transport to leave at 12:00pm







# SCHOOL TIMINGS

## Monday to Thursday Start and End of day Schedule:

	New Timings
FS1 and FS2	7:40 am. - 12:00 pm.

## Friday Start and End of day Schedule:

	New Timings
FS1 and Year 13	7:40 am. - 11:30 am.

# MORNING DROP OFF & END OF DAY PICK UP TIMINGS



## Morning Drop Off - OT Students:

### Monday to Friday

- Foundation Stage 1- to Year 13: Between 7:05 am and 7:30 am
- School gates will close at 7:35 am.

## End of Day Pick Up - OT Students

### Monday to Thursday:

- Foundation Stage -1 and Foundation Stage -2: 12:00 pm -12:20 pm

### Friday:

- Foundation Stage -1 to Year 13: 11:40 am -12:00 pm

# END OF DAY COLLECTION



Year group	Collection Rooms	Pick up timings for Parents	Pick up timings for Parents
		Monday to Thursday	Friday
FS1 -A/B/C	FS1B	12:00 pm - 12:20 pm	11:40 am to 12:00 pm
FS1 -D/E	FS1D	12:00 pm - 12:20 pm	11:40 am to 12:00 pm
FS1 - F/G/H	FS1C	12:00 pm - 12:20 pm	11:40 am to 12:00 pm
FS2 -A/B/E	FS2A	12:00 pm - 12:20 pm	11:40 am to 12:00 pm
FS2 -C/D/G	FS2C	12:00 pm - 12:20 pm	11:40 am to 12:00 pm
FS2 -F/H	FS2B	12:00 pm - 12:20 pm	11:40 am to 12:00 pm
FS2 -I/J	FS2D	12:00 pm - 12:20 pm	11:40 am to 12:00 pm

# HEALTH AND SAFETY GUIDELINES



- **'Stay at home if Unwell'** policy to be followed by everyone to maintain health and safety standards.
- Mask is compulsory indoors for all above the age of 6.
- Please encourage students to
  - maintain physical distance where possible.
  - maintain good hand hygiene by frequently and properly washing hands or using hand sanitizers.

# COMMUNICATION



- We value our connect and communication with our parents and all stake holders.
- For any meeting with the teacher, parents need to write an email and take prior appointment.
- If there is any urgent message, we request you to call the school reception and leave a message. The teacher will call you back during her non-contact time.
- **Emails** -Teachers will get back to you within 24 hours. Teachers will be unable to reply to any emails during contact time.



# BOOKS, STATIONERY AND DEVICES



## ONLINE BOOK SALE:

- Online Book Sale has already started from 15<sup>th</sup> August.
- We will share the schedule for collection once we have confirmed information of shipment arrival.

## BOOKS & NOTEBOOKS

- Bags, water bottles, lunch box and books must be clearly **labelled** with your child's name, class and section.
- No trolley bags.

# LABEL BAGS, LUNCH BOX, STATIONERY BOX & WATER BOTTLE



# SAY NO TO TROLLEY BAGS!



- Although bags on wheels look user friendly, they can be a tripping hazard in the hallways or while walking up or down a staircase. So request you to support the **NO TROLLEY BAG** Policy of the school.

Say **YES** to  
**BACKPACK!!**



Say **NO** to  
**TROLLEY** bags!



**GEMS**  
EDUCATION

# ENTRY GUIDELINES –OWN TRANSPORT STUDENTS



- OT Drop offs:** The main gate – Gate 3 will open for all students and parents at 7:05 am.
- **Car Drop offs:** Gate 3 will be open for cars to drop off students at 7:10 am.
- **The gate will close at 7:35 am.**
- **Students of FS1 and FS2** can be dropped off to their classroom, a max of 10 minutes for entry and exit for all parents.
- We will continue to follow the safety guidelines- Only one member per family to drop or pick the child. All students above the age of 6 and all parents/adults must wear mask at all times while at school.



# EXITING THE SCHOOL

**Dispersal will be staggered for different year groups to facilitate social distancing.**

- FS1 and FS2 will disperse at 11:45 am for bus students and 12:00 pm for own transport.



# ATTENDANCE AND PUNCTUALITY



To ensure your child's attainment and progress, it is imperative that your child maintains a healthy attendance record.

- Since attainment and progress is directly linked to attendance, therefore we expect all children to be regular and punctual to school and to their lessons. We expect them to have at least 96% attendance per term.
- 'Stay at home if Unwell' policy to be followed by everyone to maintain health and safety standards
- The latest your child should arrive by is 7:30 am in school. The school gate closes by 7:35 am.
- Students entering the form class after 7:40 am will be marked late and late SMS will be sent to the parents.
- If your child is absent, for any reason, parents must email the teachers before 7.45am.
- After 3 late slips, parents will be required to have a meeting with the Head of Primary.



# UNIFORM POLICY



NOTE: Students are required to come to school in school uniform for face to face lessons. In case, uniform of their size is not available at Threads - the uniform store, they need to wear the shirt/trousers/skirt as applicable, closest to the colour of our school uniform.

FS Children are expected to wear the correct uniform to school every day. It is the same uniform for both girls and boys, which includes

- Navy blue shorts, the school polo t-shirt
- Black Velcro shoes and navy blue/black socks.
- Accessories: Jewellery should not be worn with exception of a pair of small ear studs for girls.

- Please visit Threads warehouse in Time Square to purchase any  
Winchester Uniform Contact Details: THREADS HOLDINGS LTD FZT

Time Square Centre Outlet Telephone: +97143964837





## BREAK TIME

Please encourage your child to

- open the tiffin box and water bottle comfortably and independently.
- pack away the tiffin box properly.

Please send healthy finger food to school.

Please send sufficient water with your child for him/her to last the school day.

Please avoid sending nuts and eggs to school as students are allergic to them.

Please refrain to send any eatables for birthday celebration.



# SELF CARE SKILLS



- Many everyday tasks need to be practiced, such as:
- Can wash hands independently.
  - Is fully toilet trained.
  - Can dress after using the washroom, including fastening and unfastening buttons and zippers.
  - Can wear slip on shoes independently.
  - Can eat lunch or a snack without assistance, such as putting a straw in a juice box and opening a lunch box.



## WELL- BEING



The Wadeema's Law on Child rights: UAE Federal Law No 3 of 2016 and the Schools Child Safeguarding policies, child's wellbeing and basic rights should be kept foremost in all endeavors by parents and school. It is the combined duty of the parents and the school to ensure that students are healthy and safe and are able to access education continuously and consistently.

- Students must attend school regularly and parents must engage effectively in their learning and keep themselves updated about the expectations and policies.
- In case there is a valid reason for absence, parents must communicate the same immediately to the Form Tutor and Head of Key Stage.

# WELL- BEING



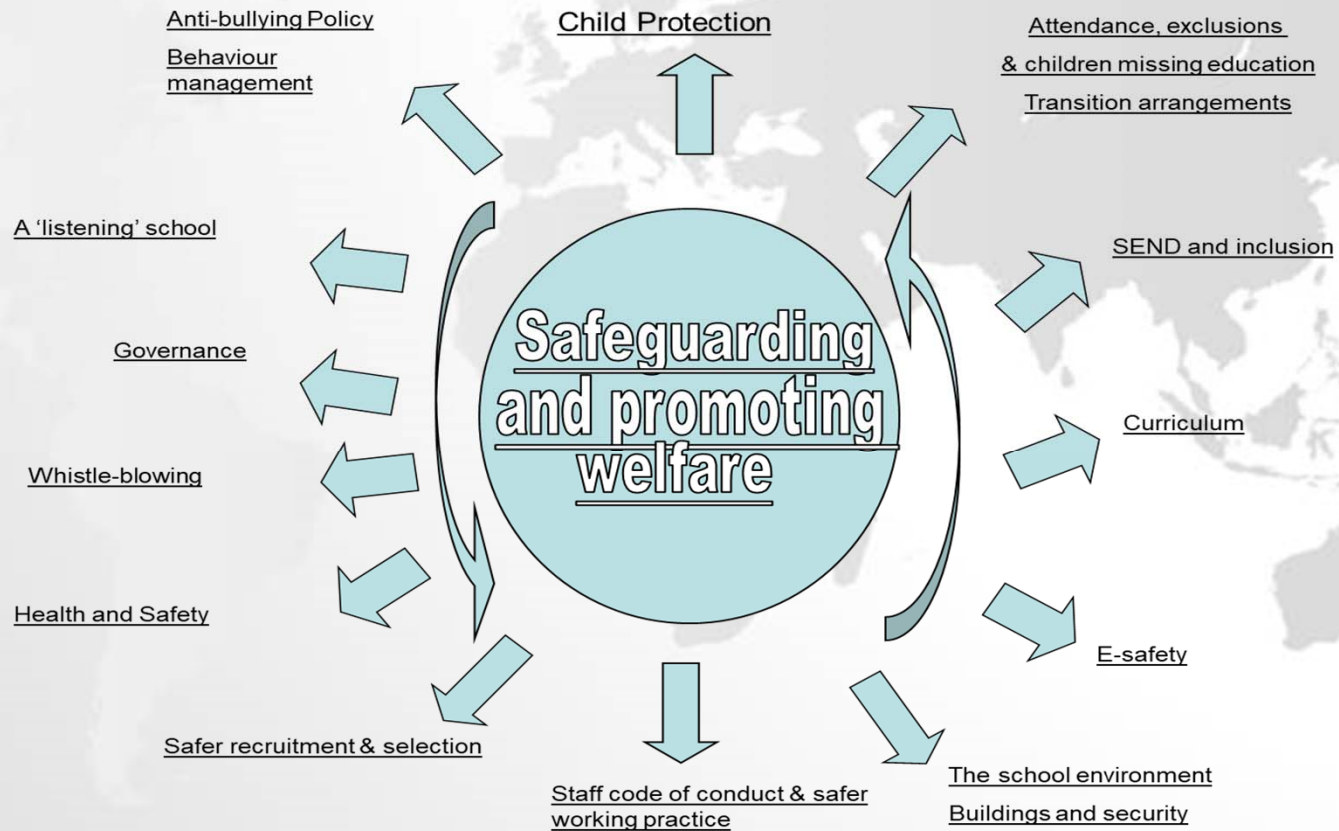
Physical, social, and emotional well-being activities will continue to be integrated into every aspect of school life to develop resilience, optimism, self-confidence and a sense of belonging in our students through:

- Positive learning environment and time to reconnect with peers and teachers
- One to one or family counselling sessions & intervention and support
- Growth mindset culture and positive leadership opportunities for students.
- Monthly well-being calendar, newsletters and webinars for students and parents by Head of Well being
- Fortnightly healthy living tips through newsletters and webinars by doctors for families





# SAFEGUARDING AND CHILD PROTECTION





Designated Safeguarding Lead  
**Ms. Harpreet Kaur, Vice Principal**

Deputy Designated Safeguarding Lead  
**Mr. Neijin Pathrose, Head Health and Safety**





# PHOENIX CLASSROOM

The step by step manuals to access PHOENIX are provided in the links below:

Parent Manual: [Classroom 3.0 Parent User Guide.pdf](#)

Student Manual: [Classroom 3.0 Student User Guide.pdf](#)





# Weekly updates

# Family Learning Newsletter



## FS 1 Weekly Updates

Term 1 // Week 1 // 29.08.22 to 02.09.22



### Welcome

A very warm welcome to all the parents and our lovely children. We look forward to a positive partnership for the overall development of our students. Visit and follow The Winchester School Twitter and Facebook page to check the activities taking place.

[https://twitter.com/win\\_jebelali?lang=en](https://twitter.com/win_jebelali?lang=en)  
<https://www.facebook.com/TheWinchesterSchoolJebelAli>

### REMINDERS

Thank you for attending the orientation and we hope that you are well -versed with the rules and regulations of the school. In case you have missed it, kindly go through the recording.

**It was an exciting and fun-filled week.**

**Literacy:** We introduced ourselves to our peers and teachers. We learnt about our favourite songs and stories. We sang many known rhymes along with actions and also sang some new ones. The first week gave children a glimpse of learning, class routines and fun they will have in their FS1 class during the academic year.



**Mathematics:** We explored different toys and counters, introduced to shapes and attempted to sort the ones with similar colours and shapes. Children were also challenged to use blocks creatively to make objects. They were prompted to make pattern using sounds of musical instruments.

**Physical Development:** We had a great time



The Winchester School  
Family Learning Newsletter (FS 1) – September 2022



Area of learning	Focus	Home activities/How can you help your child at home	Useful website
<b>Prime Area</b> <b>Personal, Social and Emotional Development</b>	<b>Making relationships</b> Seeks out others to share experiences with and may choose to play with a familiar friend or a child who has similar interest.	<p><b>Talk and share</b> with your child about the importance of sharing and playing together. Model to them sharing, by family playing together, having family meal and providing resources or toys that promote cooperative play. Talk about why sharing is good for them and others. You can say something like, 'When you share your toys with your friend, everyone gets to have fun'.</p> <p><b>Encourage</b> children to spend time and play with you or their siblings, to share and take turns while reading books, playing with toys and so on. Play a game where the child takes turns in passing the parcel and waits patiently for his/her turn. Praise them when they do so.</p> <p><b>Talk</b> to your child about their likes and dislikes. Share with them the importance of respecting their friend's preferences. <b>Encourage</b> them to be empathetic with their friends and understand their needs. Seek children's help when their siblings are upset or need help.</p>	<p><a href="#">Marvel &amp; Friends: Sharing and Taking Turns</a></p>  <p><a href="#">Sharing   Little Mandy Manners   Tiny Grads   Children's Videos   Character Songs</a></p> <p><a href="#">Value of Accepting others</a></p> 





# KEY POLICIES

Please read the key policies of the school carefully.

From: WELCOME MESSAGE FROM THE PRINCIPAL <communication\_win@gemsedu.com>  
Sent: Wednesday, August 24, 2022 8:09 AM  
Subject: WELCOME MESSAGE FROM THE PRINCIPAL

24<sup>th</sup> August 2022

Dear Parent,

Welcome to The Winchester School, Jebel Ali - **A community of learners and leaders!**

We are all so excited and ready to welcome you all to the academic year 2022-23. I am confident with our continued strive for excellence for our students - our future, we will work most cohesively and collaboratively to make it a yet another successful year!

We are very proud of our school and the accomplishments of our students and staff. The dynamic combination of our professional educators, dedicated parents and community members ensure that all students reach their maximum potential and become lifelong learners. Please do follow and keep yourself updated through our social media handles:

Facebook: [The Winchester School - Jebel Ali | Facebook](#)  
Instagram: <https://www.instagram.com/winchesterjebelali/>  
Twitter: [@winchesterjebelali](#)

Please do join me to congratulate all the students and staff for yet another year of excellent achievements and results for June 2022. Please click on [link](#) to see all results highlights.

At the Winchester School we always strive to make all experiences in the best interest of our children, this year we have to continue to collectively share responsibility of ensuring health and safety of all our children, staff and families.

**We request all parents to please adhere to the following for a safe, healthy and smooth first term:**

While we continue to strive for excellence, we will strengthen and deepen how we collaborate, make decisions, and solve problems together, we will be putting a stronger focus on continuing to build safe community with each other, our students, and you parents.

I am confident you will all agree, this can be achieved by outstanding partnership with all stakeholders. We will work collaboratively ensuring every child excels and achieves beyond their potential, securing their aspirations, which is the biggest success for us all.

We strongly believe and embrace a "Growth Mindset" - Every day we are afforded an opportunity and we all must pledge to make a positive difference in our own lives and the lives of our students - our future! Our passion and commitment is to ensure each child has a clear goal/ aspiration and is committed to achieve their best and maximizing their potential will be the driving motivational force to make our school better than previous day, day on day and the best it can be, regardless of any challenges.

I trust you will embrace the opportunity to be a part of WIN family and work in close partnership with the school to meet the set goals and highest standards. We had introduced Student Profiles and this led to better impact in student outcomes. I encourage you to work with your child and their teachers to ensure this is completed within the first 2 weeks of school and please keep it updated. More information regarding this will be shared by the Form Tutors next week.

We also request you to update your information about STS bus use/your own arrangement for drop off/pick up. Please take time to read the Welcome Pack sent by respective Head of School and Form Tutors. I encourage you all to attend the parent orientations to be fully aware of all ways of working and updated expectations.

Please find attached the [Parent Handbook](#) for information on the school's current provision. Please follow the [link](#) to access and read the key school policies.

Together We Can!

Most sincerely,

**Meenakshi Dahiya**  
Principal and CEO

Winchester School

[About Us](#)

[Why WIN?](#)

[Admissions](#)

[Curriculum](#)

[For Parents](#)

[More](#)

**View our policies, booklets and presentations.**

## Policies

- |  |  |
|--|--|
|  <a href="#">GEMS Child Safeguarding Policy Statement</a>       | <a href="#">Download</a>    |
|  <a href="#">Admission Policy</a>                               | <a href="#">Download</a>    |
|  <a href="#">Anti Bullying Policy</a>                           | <a href="#">Download</a>    |
|  <a href="#">Assessment policy</a>                              | <a href="#">Download</a>    |
|  <a href="#">Attendance Punctuality Policy and Procedures</a> | <a href="#">Download</a>  |
|  <a href="#">Behavior and Discipline Policy</a>               | <a href="#">Download</a>  |



[www.gemseducation.com](http://www.gemseducation.com)



# Important Forms



## Declaration Form

### Declaration Form

I acknowledge that my son/daughter and I have read through, understood the following policies carefully and will support my child to abide by the schools expectations.

\* Required

1. Student Name \*

Enter your answer

2. Year Group \*

Select your answer

3. Section \*

Select your answer

4. Parent Name \*

Enter your answer

## Medical and Allergy Form

### Medical and Allergy Action Plan

Instruction: Kindly fill all the details. Please write NA if not applicable.

\* Required

1. Name of the Student \*

Enter your answer

2. Year Group \*

Select your answer

3. Section \*

Select your answer

4. Medical Condition (if any) \*

YES

NO

**It is mandatory for all parents and students to read the policies and agreements and fill the forms by the 2<sup>nd</sup> of September.**

[www.gemseducation.com](http://www.gemseducation.com)



# CELEBRATIONS

We have a very strong REWARD system-

- ✓ Star of the week
- ✓ Certificates to recognise students' efforts and achievements in class
- ✓ Principals' Letter of Commendation
- ✓ Gold Leaf Award



# SUMMARY OF TERM DATES

## Term 1 (August – December 2022)

New Student Induction	Monday, 29 August (all NEW students)
Start of term for All Students	Tuesday, 30 August
Half Term	Friday, 21 <sup>st</sup> October until Tuesday, 25 <sup>th</sup> October
*National Commemoration Day & UAE National Day Holiday	Thursday, 1 December to Friday, 2 December (inclusive)
Last day of term for students	Friday, 9 <sup>th</sup> December
Winter break	Monday, 12 December to Friday, 30 December

## Term 2 (January – March 2023)

Start of term	Monday, 2 January
Half Term	Thursday, 16 <sup>th</sup> February until Friday, 17 <sup>th</sup> February
Last day of term for students	Friday, 24 March
Spring Break	Monday, 27 March to Friday, 7 April

## Term 3 (April – July 2022)

Start of term	Monday, 10 April
Last day of term	Monday, 26 June

\*All Islamic holidays are subject to confirmation from the Ministry of Education



# Thank you.

